

SAP NS2 Solution Brief | PUBLIC

Securely adopting cloud innovation | SLED Industry

A Secure Cloud for the State, Local, and Education Industry



SAP National Security Services

SAP National Security Services (SAP NS2) was founded to help protect and secure the mission critical operations of highly regulated organizations. As the U.S. cloud service provider of SAP, we provide the unique capability for state, local, and education industries to run market leading SAP applications without having to sacrifice security, innovation, or cost. Our team of local, credentialed experts provide the highest levels of security and compliance, deliver world class innovation, and protect critical data across all applications enterprise-wide.



Secure, compliant cloud technologies can transform how you operate within your industry. SAP NS2 **delivers the power of SAP's intelligent enterprise** with secure cloud solutions built to maximize data sovereignty and secure workloads.

Barriers to securely adopting cloud services for SLED agencies

State, local, and education (SLED) agencies are in charge of critical community activities, such as law enforcement, public safety, education opportunities, and more. To keep pace with modern innovation and ensure their communities are best supported, SLED agencies are seeking to adopt a cloud-first strategy. The keys to a secure digital transformation are:

A cloud portfolio that prepares for the future.

The ability to be adaptive and prepare for the future is a necessary component for SLED agencies, as they handle essential services that impact citizens and communities. They are seeking intelligent cloud solutions that connect data across lines of business, help visualize data points, and have built-in predictive technologies.

An enterprise-wide cybersecurity strategy.

SLED agencies are spanned across varying counties, towns, public school systems, higher education facilities, and districts. To create consistency in how their operations are protected, each agency aims to adopt a specific set of rules and regulations. By following government-attested security controls, such as ITAR, FedRAMP®, or DoD SRG, SLED agencies can ensure their cloud operations are protected according to the parameters put in place by their government.

SAP National Security Services

Barriers to securely adopting cloud services for SLED agencies

SAP NS2 cloud portfolio overview

Understanding how SAP NS2 deploys solutions with your security standards in mind

Navigate your operations to the cloud with SAP NS2's secure cloud deployment

Why SAP National Security Services: Secure. Local. Sovereign.

SAP NS2 cloud portfolio overview

Enterprise Resource Planning:

- SAP S/4HANA Cloud, private edition

Human Capital Management:

- SAP SuccessFactors

Business technology platform:

- SAP Business Technology Platform
- SAP Analytics Cloud

Supply Chain Management:

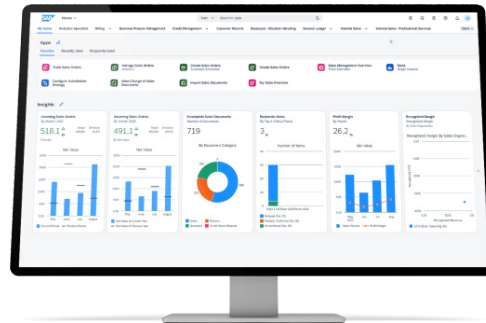
- SAP Integrated Business Planning
- SAP Service and Asset Manager

Spend Management:

- SAP Fieldglass
- SAP Ariba Procurement Solutions

Business Network:

- SAP Business Network for Procurement
- SAP Business Network for Supply Chain Collaboration
- SAP Business Network Asset Collaboration



SAP National Security Services

Barriers to securely adopting cloud services for SLED agencies

SAP NS2 cloud portfolio overview

Understanding how SAP NS2 deploys solutions with your security standards in mind

Navigate your operations to the cloud with SAP NS2's secure cloud deployment

Why SAP National Security Services: Secure. Local. Sovereign.

Understanding how SAP NS2 deploys solutions with your security standards in mind

At SAP NS2, we know that innovation fails without security. Through our U.S. sovereign deployment model, we provide SLED organizations an avenue to adopt the innovation of the cloud without compromising on security. We strictly control how our cloud portfolio is governed, where it resides, and how its data is secured.

This control empowers SLED organizations to benefit from a cloud portfolio that supports all lines of business. Our dedication to data access, data residency, and cloud sovereignty ensures state and local governments can future proof their operations while remaining protected by their industry standards.

SAP National Security Services

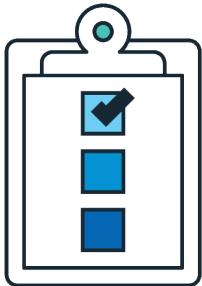
Barriers to securely adopting cloud services for SLED agencies

SAP NS2 cloud portfolio overview

Understanding how SAP NS2 deploys solutions with your security standards in mind

Navigate your operations to the cloud with SAP NS2's secure cloud deployment

Why SAP National Security Services: Secure. Local. Sovereign.



KEY BENEFITS:

- A one-stop-shop cloud provider that covers technology, security, infrastructure, and support
- SAP technology offered in a subscription-based, SaaS model to reduce operational and infrastructure spend
- A secure cloud environment that leverages government-grade security to support the public sector's digital transformation

Navigate your operations to the cloud with SAP NS2's secure cloud deployment

Smart and predictive cloud technologies. Benefit from SAP's innovative cloud technologies, such as SAP S/4HANA and SAP Analytics Cloud. These solutions have built-in artificial intelligence (AI), machine learning (ML), and predictive analytics so you can accelerate business operations.

A secure cloud environment built for SLED agencies. Your cloud landscape is hosted in a secure cloud environment dedicated to serving SLED agencies. Every solution hosted in the SAP NS2 environment adheres to NIST 800-53, ITAR, and FedRAMP® Moderate Controls.



In-country support and deployment. Our solutions are deployed on government-attested cloud infrastructure and governed and maintained within the U.S. Your critical data stays local and can only be accessed by cleared personnel to mitigate the risk of global adversaries.

Adherence to industry-specific security regulations.

- Solutions deployed in a secure cloud environment that adheres to the FedRAMP® Moderate Baseline
- A cloud maintenance strategy that minimizes operational downtime while still providing automated security, disaster recovery, and critical patching
- Enhanced service level agreements for all-encompassing support of critical infrastructure

SAP National Security Services

Barriers to securely adopting cloud services for SLED agencies

SAP NS2 cloud portfolio overview

Understanding how SAP NS2 deploys solutions with your security standards in mind

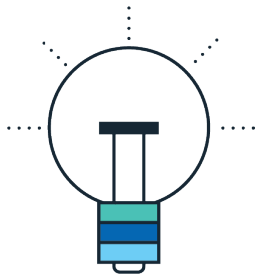
Navigate your operations to the cloud with SAP NS2's secure cloud deployment

Why SAP National Security Services:
Secure. Local. Sovereign.

Why SAP National Security Services: Secure. Local. Sovereign.

We understand that SLED organizations face different international threats and have unique compliance requirements surrounding their cloud operations. We are the solution for meeting and exceeding these challenges.

The innovation, functionality, and services of the SAP NS2 solution portfolio meets the same standards as SAP Commercial, but SAP NS2 provides sovereign cloud capabilities through services based entirely in the United States.



We leverage tools such as vulnerability scanning, intrusion detection, and continuous monitoring to ensure your data stays protected under an automated security model.

- Protection of mission-critical workloads and the ability to support government agencies through adherence to the FedRAMP® Moderate baseline and DoD IL2.
- Adherence to ITAR provides dedicated U.S. resources to support your cloud landscape through deep industry and regional compliance knowledge.
- Our offering mitigates the risk of external threats by limiting system management, providing in-country deployment, and leveraging an enterprise strategy to control the data and resource access within your region.

SAP National Security Services

Barriers to securely adopting cloud services for SLED agencies

SAP NS2 cloud portfolio overview

Understanding how SAP NS2 deploys solutions with your security standards in mind

Navigate your operations to the cloud with SAP NS2's secure cloud deployment

**Why SAP National Security Services:
Secure. Local. Sovereign.**

